

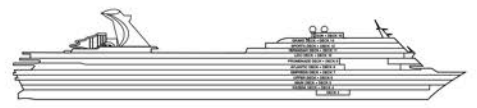
ACCOMMODATIONS SYMBOL LEGEND

- ★ 2 Twin Beds (convert to King) and Single Sofa Bed
- ◆ 2 Twin Beds (convert to King) and 1 Upper Pullman
- 2 Twin Beds (convert to King), Single Sofa Bed and 1 Upper Pullman
- † 2 Twin Beds (convert to King) and 2 Upper Pullmans
- ‡ 2 Twin Beds (convert to King) and Double Sofa Bed
- ∞ 2 Twin Beds (convert to King), Double Sofa Bed and 1 Upper Pullman
- ◇ 2 Twin Beds (convert to King), 1 Lower Pullman, and 1 Upper Pullman
- ◆ Stateroom with 2 Porthole Windows
- ◊ Connecting staterooms (ideal for families and groups of friends)
- ◊ Twin beds do not convert to a King Bed.
- U Unisex Wheelchair Accessible Restroom
- BA BC BK BD Balcony Stateroom: Beds do not convert to King when both Upper Pullmans in use

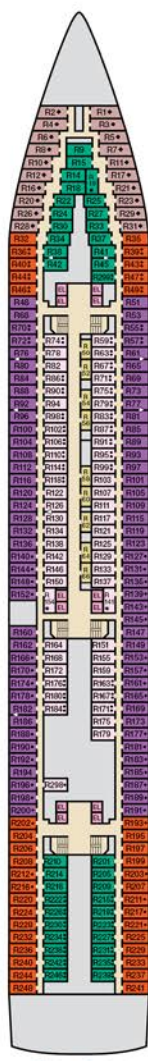
All accommodations are non-smoking.
Accessible staterooms are available for guests with disabilities. Please contact Guest Access Services at 1-800-438-6744 ext. 70025 for details, or visit <http://www.carnival.com/about-carnival/special-needs.aspx>.

CATEGORIES

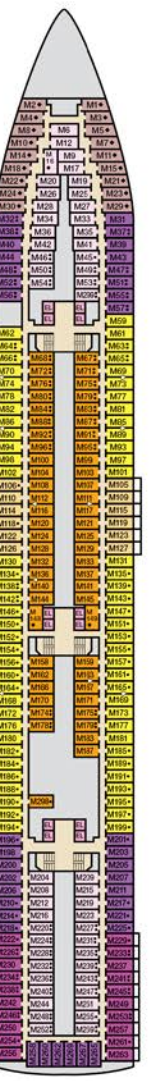
- 1A Interior Upper/Lower
- P1 Porthole
- AM AB AC AD AE AI Interior
- OA OB OC OD OE OF Ocean View
- M Scenic Ocean View
- BA BB BC BD Balcony
- BE Aft-View Extended Balcony
- OB Junior Suite (obstructed views)
- OS Junior Suite
- GS Grand Suite
- ES Extended Balcony Grand Suite
- VS Grand Vista Suite



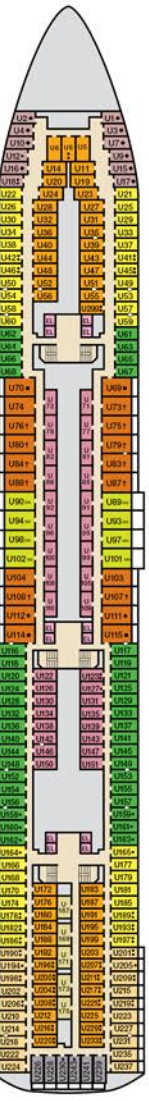
Gross Tonnage: 70,367 Length: 855 Feet Beam: 103 Feet
Cruising Speed: 21 Knots Guest Capacity: 2124 (Double Occupancy)
Total Staff: 920 Registry: Panama



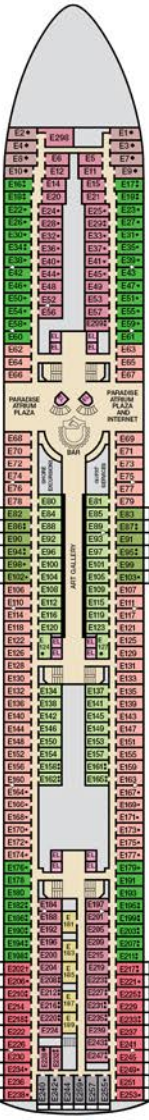
Riviera • Deck 4



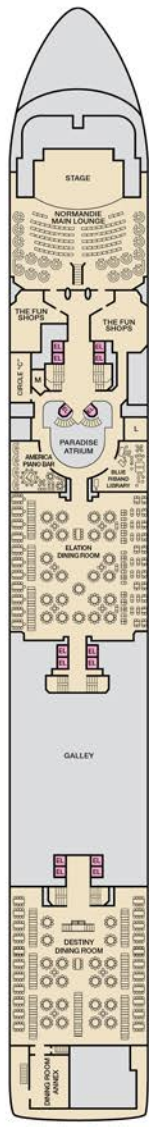
Main • Deck 5



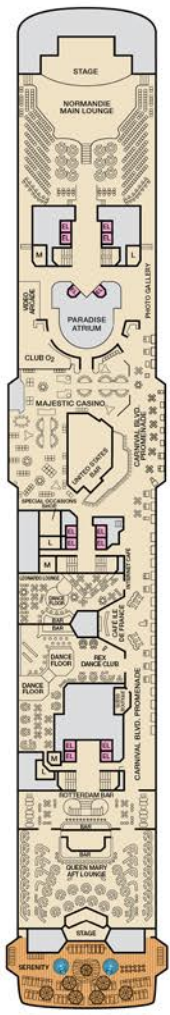
Upper • Deck 6



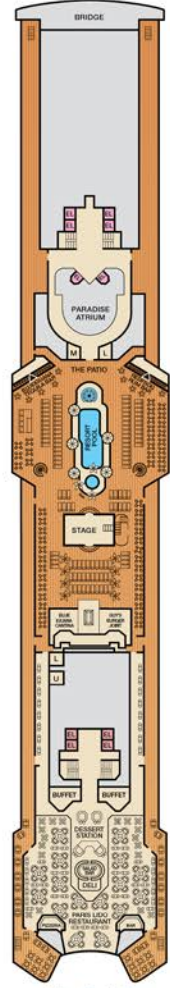
Empress • Deck 7



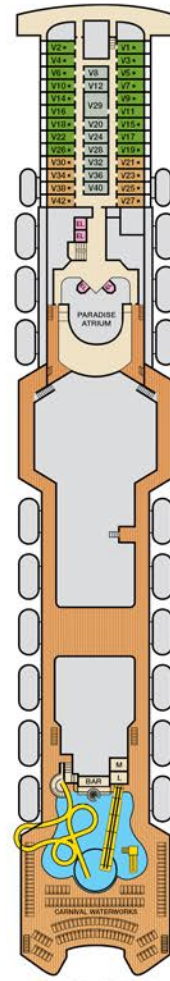
Atlantic • Deck 8



Promenade • Deck 9



Lido • Deck 10



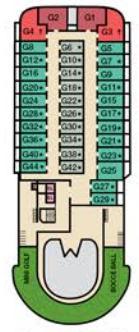
Verandah • Deck 11



Forward Sports • Deck 12



Sun • Deck 15



Grand • Deck 14